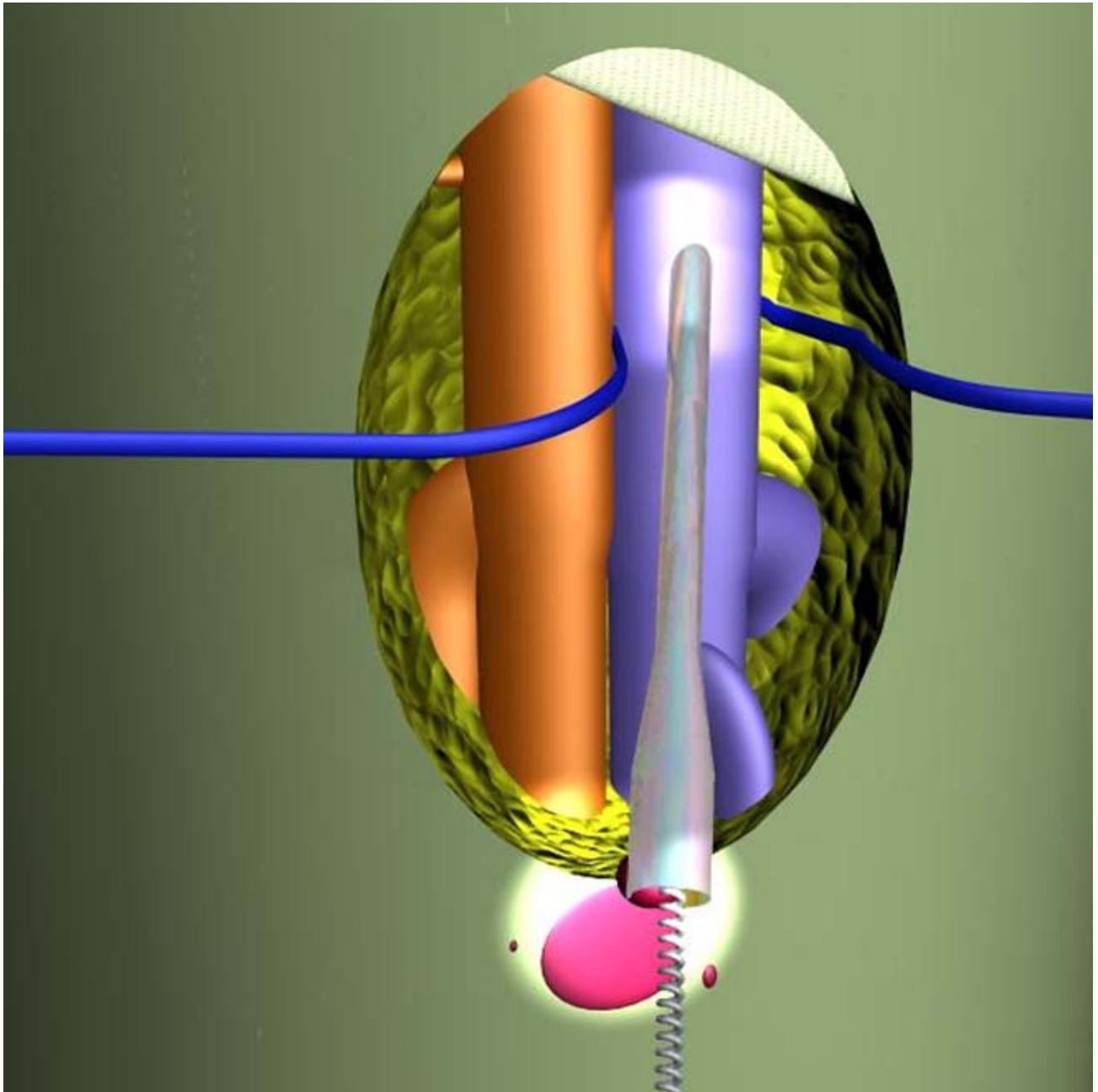


The smart canula[®] Dilator Set

Next generation design for superior performance



The *smart canula[®] Dilator Set* is designed for percutaneous or semi-open vascular access with diameters from 8F to 24F

No 1205

www.smartcanula.com

The smart canula[®] Dilator Set

next generation design

Ordering information for typical *Smartcanula[®] Dilator Set* configurations



Catalog Numbers*	Set Content	Units Number	Platform Diameter Inch	Size Length cm	Size Diameter F	Configuration
D8F-D24F J7.5 100 035 G18	Hollow needle	1	.035	8		18 G
	Guide wire	1	.035	100		J 7.5
	Dilator	1	.035		8/10F	Step-tip
	Dilator	1	.035		10/12F	Step-tip
	Dilator	1	.035		14/16F	Step-tip
	Dilator	1	.035		18/20F	Step-tip
	Dilator	1	.035		22/24F	Step-tip

For more information, contact your local *smart canula[®]* sales representative

*ordering numbers include smartcanula[®] specific mandrel for collapsed insertion

device specifications may change at any time without prior notice



Patents: US 6,626,859, WO 015273, EP 1248571